

Team Changes, Important iBase Update & New Course!



This Issue

	Page
Team News & Articles	2-3
Tips & Tricks: Analyst's Notebook & iBase	4-5
New Featured Course	6
Course Schedule	7

Find all past editions of our Newsletter here: <http://shortestpathtraining.co.uk/newsletter/>

Find our YouTube channel here: <https://tinyurl.com/7h5uv4>

Sign up to our mailing list to receive new editions via email: info@shortestpathtraining.co.uk

Team News & Articles

A new season...

Hello to our readers!

We hope you had a radiant summer (or at least partially—as it is with the British weather!).

In between our holidays, we have been delivering lots of online training, including overseas, in Europe.

Holly's News

For the next season, Holly will be swapping iBase for Baby!

She is embracing the new adventure of motherhood and will be heading off on maternity leave from early October 2021.

Welcome to Kelly! New Trainer for SPT

Hello All,

My name is Kelly Lyons and I am pleased to join Shortest Path Training as the newest Software Trainer.

I am returning to the world of work following a career break spent bringing up my 4 children. Joining SPT really feels like coming home as I previously spent over 6 years working as a Software Trainer for both i2 Ltd and IBM. I wrote and delivered courses to students from all over the world.

I also spent 7 years in the Military working as an Analyst in the Intelligence Corps. During this time, I used i2 products on a frequent basis, both at home and whilst deployed on operations.

I am excited to take on this new challenge and hope to meet some of you on our courses.



Brand New Course

IBM i2 iBase Designer Refresher and Upgrade

We are excited to announce our new course offering for iBase Designers/Administrators. The course runs for 3 days and is for experienced users who have already attended an iBase Designer Course or those who have already designed, created and maintained an iBase database.

For more information—see our Featured Course page: 6

End of Life announcement for IBM i2 iBase Version 8

A word from IBM:

The iBase 9 upgrade process requires your existing deployment to already be at V8.9.13. If your organisation is running an earlier version of iBase you will need to move it to V8.9.13 prior to running the upgrade. In April 2022, iBase 8 will reach its official end of life - meaning only iBase 9 will be supported from this date onward.

As such, you should consider upgrading as soon as possible. After April 2022, the downloads of V8.9.13 will no longer be available through IBM Passport Advantage and we therefore advise you download this software now in preparation for your migration to iBase 9.

Now the summer is over, our vision is set to our next releases where we look forward to bringing more capabilities to you all - the analysts who need them.

The IBM i2 Team

Please do pass this information onto your relevant i2 SPOC/IT Department.

National Analyst's Conference 8-9 December 2021

We are looking forward seeing you at the National Analyst's Conference for the fifth time! The event will include:

- All the latest Continuous Professional Development (CPD) opportunities available for analysts
- Best practice and case studies from analysts who share their experiences and lessons learned from being at the heart of some of the most challenging investigations
- Updates from sponsors on latest technology, training and software
- Cutting edge developments in digital investigation best practice
- Latest tips and techniques from the team at Shortest Path Training Ltd, the leading IBM i2 software experts.

For further information and to book, visit:

[NATIONAL ANALYST'S CONFERENCE](#) | [The Investigator \(the-investigator.co.uk\)](#)



Team News & Articles

Planning Your Training Requirements and Budgets

How can we help?

Firstly we can assist you if you need to apply for training budget, by assisting you with the choice of which courses would best suit your Analyst's needs for new starters and Analyst's wishing to enhance their use of the software.

Existing Budgets and End of Year Spend

We can also assist you if you have already had a budget approved by assessing your requirements and suggesting the best courses to meet these. We can also help if you have end of year training budget left over; let us help you get the best possible training for the remainder of your training budget.

Training Days

You can also purchase training strategically, this can be done by purchasing Training Days that you can use within 12 months of purchasing on courses of your choice, giving you further flexibility. We have found organisations find this helpful as they don't need to apply for budget on an ad-hoc basis.

New Bitesize Courses

We have also introduced a number of "Bite-size" Courses – these take some elements of the full Analyst's Notebook and iBase Standard Courses. This means you have the flexibility to learn just the topics that interest you, and if it is difficult to find the time to attend a full 2 or 3 day course. These are excellent starting points for a new Researcher or Analyst, or for an experienced Analyst's to refresh their knowledge.

New Course Levels

Course Levels have also been introduced to assist you when selecting your courses, and we have a brand new iBase Designer Refresher and Upgrade Course.

Online Courses

We have made all of our courses available for you to attend Online as we are aware that these courses are extremely useful and reduce the costs due to organisations not having to cover expenses. They also allow your analyst's a good work life balance reducing the time they need to be away from home. Some organisations would prefer a course just for their delegates, by booking at least 5 delegates on the same course Online, this can give you a closed course.

Classroom and Onsite Courses

We are also scheduling our classroom courses for those of you who would enjoy visiting us in Cambridge. We will be more than happy to see you there and we can provide details about requirements for attending these courses. Of course we can also deliver training at your premises as well.

* Access for All News* For UK Policing

Shortest Path Training has been working with IBM and Police ICT as part of the Access for All Agreement. Part of the agreement has been to deliver training for members of this agreement.

As you are probably aware, the Training element of this agreement has now ended, and with this in mind, please be aware if you do have a training requirement you will need to come to us direct and to source funding yourselves. We are here to help with advice, setting budgets and to help you plan ahead for your future training needs.

Please note the agreement for supplying i2 licenses is still continuing.



Tips & Tricks

View Tips & Tricks as a YouTube Video: <https://tinyurl.com/ybvfkv56>

Analyst's Notebook: Importing—Using Type from a Column

When Importing data into Analyst's Notebook, instead of choosing one particular Type for Entities or Links, you can in fact use data from a column to use various Types.

Analyst's Notebook will look at the characters in the column and use the relevant Types for each row—providing it matches up with the Type name in your Template exactly.

This is very useful when you have more than one kind of data in a column.

As an example: you may want to import both SMS and Telephone Call Links; or a variety of vehicles, such as Car, 4x4, Lorry and Van. Or a mixture of people, such as Male, Female and Person (Generic).

In this example, we have titled column B *Type of Entity* and included some values that are in the software's Template and some that are not:

	A	B
1	Name	Type of Entity
2	John Smith	Male
3	Sally Jones	Female
4	Daisy The Cow	Cow
5	Sir Tiddles	Cat
6	100600	Business Account
7	DS4101PK	Drone
8	Sam Weebel	Person (Generic)

Entity	Cards	Attributes
Property		Value
Representation		Icon
Type		[Type of Ent...]
Identity		[Name]
Label		(same as Identity)
Date		(not set)

Once at the Assign Columns stage, you will need to assign the relevant Type column as the Value for Type, as above (shortcut: drag and drop the column).

The Link or Entity that is using a column for Type will appear in green in the Import Specification.



Result:

When the characters in your column do not correspond to the

Template, it will generate a new Type on your chart. This will look like a circle, as above. Although this may not be visually useful, it is still a valid Type and so is good for searching and analysis.

You can modify your newly created Types in Chart Properties—Definitions, such as adding a Picture and adding to a suitable Palette.

The Type will not be available for new charts unless you save it to a Template:

- File: Template
- Create Template
- Choose Standard (default) or Local Template <enter a name> OK.

Tips & Tricks

View Tips & Tricks as a YouTube Video: <https://tinyurl.com/ybvfkv56>

iBase (version 9): Find—Reset and Create a New Entity or Query from within the dialog

Find

If you are not familiar with Find, it is a structured search tool which enables you to search for partial information and you can also use wildcards.

In version 9, the tool has been rewritten; it is significantly quicker, for example, we can bring back thousands of records instantly.

Create a New Entity

It is important to search for records prior to creating any new ones in the database to prevent the creation of duplicate records.

Select 'Create Entity' within the dialog. Find will store your search criteria to speed-up the input process.

Find - Location X

Location

Number: 25

Street Name:

Town/City:

Post Code: SG95FP

URN:

Indexed fields only

Reset Find

Reset to clear your search criteria.

0

Create Query... Create Entity... Close Help

What's new?

We now have the option to:

1. Create new Entities directly from Find
2. Create and save search criteria as a Query for further use
3. Reset the dialog

Create a New Query

Alternatively, you can create a new Query directly from within the Find dialog by selecting 'Create Query'. This enables you to build on your search criteria to ask more targeted questions of the data.

Featured Online Course

Brand New Course IBM i2 iBase Designer Refresher and Upgrade V9 Course

Level 3 - Experienced

Duration: 3 days

Class size: A maximum of 10 (classroom) and 6 (online)

"I have already attended an iBase Designer Course, but I haven't used the skills I learnt for a while now and so need a refresher."

What skills will you gain?

- How to create an iBase database including Entities, Links and Fields
- Set up and manage user access and permissions to the database
- The knowledge and skills required to setup additional functions in iBase, maintain the database in iBase Designer, and to understand how to work with your IT department including SQL Server Administrators
- An awareness of what is new to version 9

Objectives

By the end of the course delegates will be able to:

- Create an iBase database and create new Entity Types, Link Types and Fields
- Set up users by utilising security that controls access to data and functions
- Configure functions such as Search 360, History and Alerting using iBase Designer
- Modify a database that already has data, and keep it up to date over time

Is this the right course for you?

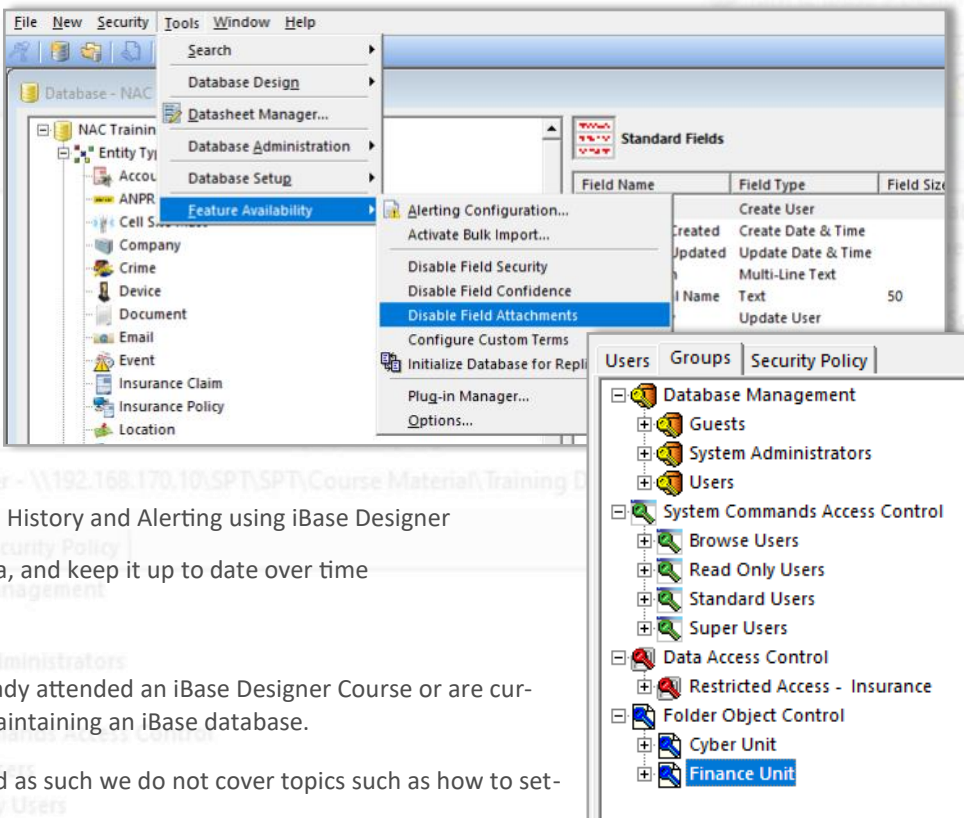
This course is aimed at users who have already attended an iBase Designer Course or are currently involved in designing, creating and maintaining an iBase database.

Please note this is not a technical course and as such we do not cover topics such as how to set-up SQL Server for iBase.

Where Next?

As an iBase Designer you need to be as knowledgeable as you can about iBase and as such we would recommend any iBase Level 2 Course.

If your users also use iBase with other products, such as Analyst's Notebook, we would recommend any relevant course to improve your knowledge; enhancing your ability to design and furthermore get the most out of your iBase database.



SPT Course Schedule November 2021—March 2022

Location	Description	Level	Date(s)	Length
Online	iBase Introduction to Searching, Queries, and Charting (Bite-size)	Level 1 - Foundation	Mon 01 Nov	1 day
Online	Analyst's Notebook Creating Charts (Bite-size)	Level 1 - Foundation	Tue 02 Nov	1 day
Online	Analyst's Notebook Introduction to Importing and Analysis (Bite-size)	Level 1 - Foundation	Wed 03 Nov	1 day
Cambridge	iBase Standard	Level 1 - Foundation	Thu 11 - 12 Nov	2 days
Cambridge	iBase Designer	Level 3 - Experienced	Mon 15 - 19 Nov	5 days
Online	iBase Importing	Level 2 - Progression	Mon 22 Nov	1 day
Online	iBase Analysis	Level 2 - Progression	Tue 23 Nov	1 day
Online	Using iBase with Analyst's Notebook	Level 1 - Foundation	Wed 24 Nov	1 day
Online	Analyst's Notebook Dissemination	Level 2 - Progression	Thu 25 Nov	1 day
Online	Analyst's Notebook Social Network Analysis	Level 2 - Progression	Fri 26 Nov	1 day
Online	iBase Designer Refresher and Upgrade	Level 3 - Experienced	Mon 29 Nov - 01 Dec	3 days
Online	Analyst's Notebook with Cyber and other Digital Data	Level 1 - Foundation	Thu 02 - 03 Dec	2 days
Online	Analyst's Notebook Standard	Level 1 - Foundation	Mon 06 - 08 Dec	3 days
Cambridge	iBase Standard	Level 1 - Foundation	Thu 09 - 10 Dec	2 days
Online	Analyst's Notebook Creating Charts (Bite-size)	Level 1 - Foundation	Tue 11 Jan	1 day
Online	Analyst's Notebook Introduction to Importing and Analysis (Bite-size)	Level 1 - Foundation	Wed 12 Jan	1 day
Online	iBase Introduction to Searching, Queries, and Charting (Bite-size)	Level 1 - Foundation	Thu 13 Jan	1 day
Online	Analyst's Notebook Standard	Level 1 - Foundation	Mon 17 - 19 Jan	3 days
Online	iBase Standard	Level 1 - Foundation	Mon 24 - 25 Jan	2 days
Online	Analyst's Notebook Importing	Level 2 - Progression	Mon 24 Jan	1 day
Online	Analyst's Notebook Analysis	Level 2 - Progression	Tue 25 - 26 Jan	2 days
Online	Analyst's Notebook Dissemination	Level 2 - Progression	Thu 27 Jan	1 day
Online	Analyst's Notebook Social Network Analysis	Level 2 - Progression	Fri 28 Jan	1 day
Online	iBase Designer	Level 3 - Experienced	Mon 31 Jan - 04 Feb	5 days
Cambridge	Analyst's Notebook Standard	Level 1 - Foundation	Mon 21 - 23 Feb	3 days
Cambridge	iBase Standard	Level 1 - Foundation	Thu 24 - 25 Feb	2 days
Online	iBase Importing	Level 2 - Progression	Tue 08 Mar	1 day
Online	iBase Analysis	Level 2 - Progression	Wed 09 Mar	1 day
Online	Using iBase with Analyst's Notebook	Level 1 - Foundation	Thu 10 Mar	1 day
Online	iBase Designer Refresher and Upgrade	Level 3 - Experienced	Mon 14 - 16 Mar	3 days
Online	Analyst's Notebook with Cyber and other Digital Data	Level 1 - Foundation	Wed 06 - 07 Apr	2 days

Green rows are i2 Analyst's Notebook course; Gold rows are i2 iBase course; Orange rows are iBase & Analyst's Notebook together

The 1 day Bite-size courses are taken from our Analyst's Notebook and iBase Standard Courses

Level 1 - Foundation: for users who are new to i2, self-taught, have had no formal training, or would like to refresh their i2 Knowledge.

Level 2 - Progression: for users who have already attended the relevant Level 1 Course(s), and wish to progress their skills.

Level 3 - Experienced Courses,: for users who have attended at the relevant Level 1 Course, and our Level 2 Courses too, if possible.