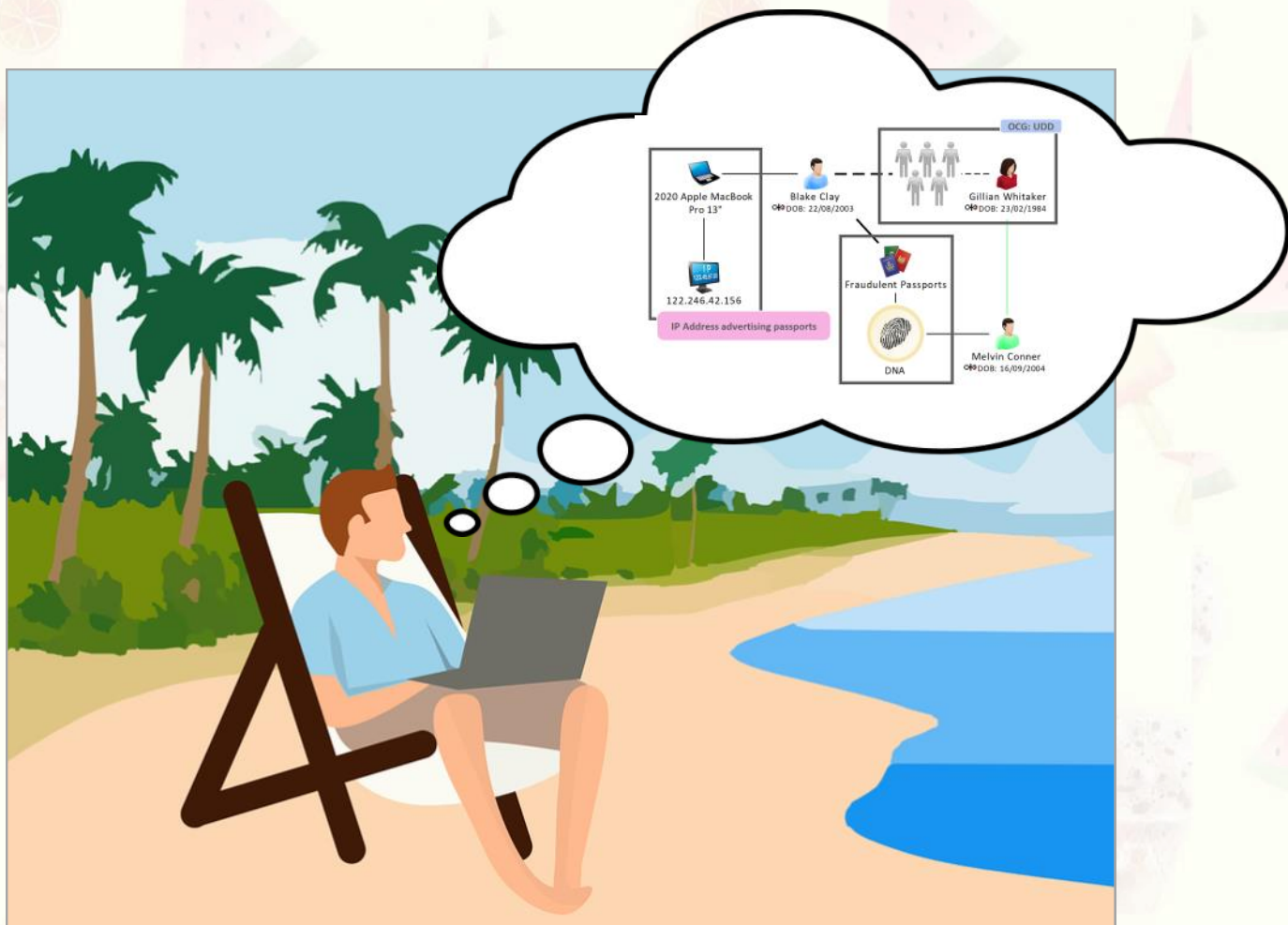


The Summer Edition



This Issue

	Page
Team News	2
Articles	3
Tips & Tricks: Analyst's Notebook & iBase	4-5
Course Schedule	6

Find all past editions of our Newsletter here: <http://shortestpathtraining.co.uk/newsletter/>

Find our YouTube channel here: <https://tinyurl.com/7h5uv4>

Sign up to our mailing list to receive new editions via email: info@shortestpathtraining.co.uk

Team News

Welcome

Hello! Welcome to our Newsletter Edition 13—The Summer Edition. We hope you have been enjoying the glorious sunshine so far and look forward to seeing you soon.

1 Day Online Courses - Bite-size for Summer

For the summer season, we are introducing the following live 1 Day Online Courses (Level 1):

- Analyst's Notebook Creating Charts
- Analyst's Notebook Introduction to Importing & Analysis
- iBase Introduction to Searching, Queries & Charting



Who are they for?

- New users
- Self-taught, or informally taught, users
- Those who want to refresh their knowledge

These courses are based on sections of the Analyst's Notebook and iBase Standard Courses and are particularly convenient for those who have other commitments during the summer period and want to improve their skills without compromising on time.

Live Online Training

We continue to deliver all of our courses online with delegates attending from far and wide—from Cambridge to Dubai.

No planes, trains or automobiles required!



Back in the Classroom!

We are pleased to inform you that we have been delivering classroom courses since May alongside our popular online courses.

Our classroom courses are Covid secure; we have reduced the amount delegates on each classroom course so that we can keep everyone safe.

If you have any questions about being in the classroom or training generally, do get in touch: info@shortestpathtraining.co.uk



New Level 1, 2 & 3 Course Categorisation

We have assigned levels to our courses in order to assist you with identifying the best course for you, or for any colleagues you may be booking for, as follows:

Level 1 - Foundation Courses

Aimed at users who are new to i2, self-taught, or who have had no formal training; as well as those who would like to refresh their i2 Knowledge.

Level 2 - Progression Courses

Aimed at those users who have already attended the relevant Level 1 Course(s) and wish to progress their skills.

Level 3 - Experienced Courses

Like our iBase Designer Course, are for users who have attended at least the relevant Level 1 Foundation Course, and our Level 2 Courses too, if possible. They require delegates to have a good understanding of all areas of the software.

Articles



National Analyst's Online Conference



On 26-27 May we attended the National Analyst's Conference for the third time, which is hosted by Carol and Dale at The Investigator.

We very much enjoy supporting analysts and so this is the perfect opportunity to learn about their excellent work, efforts and, best practice, as well as the challenges they face.

Key themes included:

- The significant roles and work analysts have undertaken in relation to a number of operations
- Improving the continuous professional development of analysts, such as: the National Institute of Cyber and Digital Investigation Professional program — College of Policing and West Yorkshire Police's high-end analysis capability
- Addressing challenges, such as improving support for analysts within their own organisations, ensuring that the role of the analyst is properly understood & utilised, and routes for increasing the training and opportunities that analysts are able to access.
- Learning more about the technological advances analysts have at their finger tips, such as the applications JTOL and Chorus. We particularly enjoyed hearing about how tools such as these have the capability to integrate with i2 Analyst's Notebook for more in-depth analysis.

Shortest Path's Live i2 Demonstration

We had the opportunity to deliver a live demonstration showing the latest features and enhancements to iBase and Analyst's Notebook—version 9.

If you attended the event and have any questions or feedback as to what you would like us to demonstrate at future events, please do let us know using the following email address:

info@shortestpathtraining.co.uk

What our clients say about us



i2 Analyst's Notebook Introduction to Importing & Analysis - Online Module

May 2021

The trainer was excellent and delivered the content not just professionally, but with good humour and lots of patience.

It was my first experience of an interactive training session where the learning was live/online and for me, it worked really well - almost equal to one on one.

State Agency, Ireland



i2 Analyst's Notebook Standard Course - Online

March 2021

The lessons and exercises were very well presented and easy to follow. The trainer was very helpful, approachable, supportive and knowledgeable.

Government Department, UK

Tips & Tricks

View Tips & Tricks as a YouTube Video: <https://tinyurl.com/ybvfkv56>

Analyst's Notebook: Creating a New Attribute & Saving to Template

Analyst's Notebook is incredibly flexible. If the Entity Type, Link Type or Attribute Class you require is not in the Standard Template (provided with the software), you can create your own.

For example, you may want to analyse durational data, but note there isn't a suitable Duration Attribute to store your data within Notebook's Standard Template. Here's how to create one:

Creating a New Attribute

1. Go to File: Chart Properties
2. Definitions: Attribute Classes
3. New—pick a suitable type for the data value you wish to store: Text, Flag (Yes/No), Number, or Date & Time. *It is important to pick a suitable Type for your data value in order to search and analyse it effectively.*
4. Enter: Name and choose a symbol (if required)
5. Add a prefix and suffix (if required)
6. You may need to set decimal places accordingly if creating a Number Type Attribute

Note the sample showing how the Attribute will appear

7. If creating a Duration Attribute, it is worth choosing the Semantic Type 'Duration', so that the software knows what the data is (particularly useful when using Activity View to analyse duration). There are various Semantic Types for different kinds of data
 8. Assign the Attribute to the required User Palettes i.e. Common and Telecoms
 9. OK
- The Attribute is now available to use in the chart you are in, however it will not be saved for future use in other new charts, unless you save to a Template...

Saving to a Template

To make the Attribute available in new charts; create a Template:

1. Go to File: Template
2. Create Template and either
 - a) choose Standard Template or
 - b) create a new one (select Local Template and type in a name).

The image shows two parts: a dialog box for creating an attribute and a sample chart.

Dialog Box: Edit Attribute Class "Duration"

- Name:** Duration
- Semantic Type:** Duration
- Display:**
 - Symbol (with a blue 'D' symbol)
 - Class Name
 - Prefix: Duration:
 - Suffix: Secs
 - Show On Chart
 - Value
 - Decimal Places: 0
- User Palettes:**
 - Activities
 - Colours
 - Commodities
 - Common
 - Crime
 - Cyber Crime
 - Documents
- Behaviour:**
 - On Paste: sum of both values
 - On Merge: sum of both values

Sample Chart:

The chart shows two mobile phone events. The first event is for phone number 07773698426, with a duration of 182 seconds, starting on 01/01/2021 at 11:00. The second event is for phone number 07854691037, with a duration of 260 seconds, starting on 01/01/2021 at 12:00. The 'Duration' attribute is represented by a blue 'D' symbol followed by the value and unit.

Tips & Tricks

View Tips & Tricks as a YouTube Video: <https://tinyurl.com/ybvfkv56>

iBase: Using Auto-Run Browse Definition

Browse Definitions

Browse Definitions enable you to review a list of Entity and or Link Records and specific fields in a table format.

Auto-run Browse Definitions

Auto-run Browse Definitions allow you to see the results of Records, a Set or Query every time you open the database.

These can be particularly useful to expediate daily tasks, for example — receive a brief of new crime and intelligence reports each morning when you log into your database.

Daily Reporting i.e. Morning Crime

Requirements

1. First, create your Query for the records you wish to see each day, for example — *find crimes relating to theft and burglary since yesterday:*

Setting up Auto-run

Now you are ready to set up an Auto-run Browse Definition for your Query.

1. Go to: Database Explorer—Browse Definitions
2. Right mouse click—choose New
3. Select the Entity Type and the Query, together with the fields you want to view in the results
4. Tick the Auto-run option at the bottom of the dialog box.
5. Save and close.

The screenshot shows the iBase interface. On the left, a 'Query - New Query' window displays a table of conditions for 'Crime 1 (Crime)'. The table has columns for Field, Operator, Value 1, and Value 2. The conditions are: Crime Type contains theft; OR Crime Type contains burglary; AND Date Time Created same as or after @#nowdate-1. Below the table are buttons for Insert, Delete, Repeat, and navigation arrows. On the right, a 'Browse - Crime' dialog box is open, showing 'Configuration' settings. The 'Browse the entity/link type:' dropdown is set to 'Crime'. The 'Records' radio button is selected, and the 'Daily Crime Reports' query is chosen. The 'Fields' section has checkboxes for Crime Type, Crime Number/Ref, Crime Date, Date To, Crime Time, Time To, and Case Status, all of which are checked. At the bottom of the dialog, the 'Auto-run' checkbox is also checked. Yellow arrows point from the text above to the 'Crime' dropdown and the 'Auto-run' checkbox in the dialog.

Field	Operator	Value 1	Value 2
Crime Type	contains	theft	
* OR			
Crime Type	contains	burglary	
AND			
Date Time Created	same as or after	@#nowdate-1	

Label	Crime Type	Crime Number/Ref	Crime Date
Burglary NON Dwellin...	Burglary NON Dwelling	CR/57483/21	16/04/2021
Theft from Person 15/...	Theft from Person	CR/2979/21	15/04/2021
Theft of Motor Vehicle...	Theft of Motor Vehicle	CR/2983/21	15/04/2021
Theft of Motor Vehicle...	Theft of Motor Vehicle	CR/2993/21	15/04/2021

Whenever you open iBase you will see the list of records in a table:

Note the condition @#NOWDATE-1 same as or after—this will include yesterday's crimes and up to present.

2. Save the Query.

SPT Course Schedule June—September 2021

Location	Description		Date(s)	Length
Cambridge	Analyst's Notebook Standard	Level 1 - Foundation	Mon 07 - 09 Jun	3 days
Online	iBase Standard	Level 1 - Foundation	Thu 10 - 11 Jun	2 days
Online	iBase Designer	Level 3 - Experienced	Mon 14 - 18 Jun	5 days
Online	Analyst's Notebook Creating Charts (Bite-size summer course)	Level 1 - Foundation	Tue 22 Jun	1 day
Online	Analyst's Notebook Introduction to Importing and Analysis (Bite-size summer course)	Level 1 - Foundation	Wed 23 Jun	1 day
Online	iBase Introduction to Searching, Queries, and Charting (Bite-size summer course)	Level 1 - Foundation	Thu 24 Jun	1 day
Online	iBase Importing	Level 2 - Progression	Mon 28 Jun	1 day
Online	iBase Analysis	Level 2 - Progression	Tue 29 Jun	1 day
Online	Using iBase with Analyst's Notebook	Level 2 - Progression	Wed 30 Jun	1 day
Online	Analyst's Notebook Standard	Level 1 - Foundation	Mon 12 - 14 Jul	3 days
Online	iBase Standard	Level 1 - Foundation	Thu 15 - 16 Jul	2 days
Cambridge	iBase Designer	Level 3 - Experienced	Mon 19 - 23 Jul	5 days
Cambridge	Analyst's Notebook Standard	Level 1 - Foundation	Mon 02 - 04 Aug	3 days
Online	Analyst's Notebook Standard	Level 1 - Foundation	Mon 02 - 04 Aug	3 days
Cambridge	iBase Standard	Level 1 - Foundation	Thu 05 - 06 Aug	2 days
Online	iBase Standard	Level 1 - Foundation	Thu 05 - 06 Aug	2 days
Online	Analyst's Notebook Creating Charts (Bite-size summer course)	Level 1 - Foundation	Tue 10 Aug	1 day
Online	Analyst's Notebook Introduction to Importing and Analysis (Bite-size summer course)	Level 1 - Foundation	Wed 11 Aug	1 day
Online	iBase Introduction to Searching, Queries, and Charting (Bite-size summer course)	Level 1 - Foundation	Thu 12 Aug	1 day
Online	Analyst's Notebook Creating Charts (Bite-size summer course)	Level 1 - Foundation	Tue 17 Aug	1 day
Online	Analyst's Notebook Introduction to Importing and Analysis (Bite-size summer course)	Level 1 - Foundation	Wed 18 Aug	1 day
Online	iBase Introduction to Searching, Queries, and Charting (Bite-size summer course)	Level 1 - Foundation	Thu 19 Aug	1 day
Cambridge	Analyst's Notebook Standard	Level 1 - Foundation	Mon 06 - 08 Sep	3 days
Cambridge	iBase Standard	Level 1 - Foundation	Thu 09 - 10 Sep	2 days
Online	Analyst's Notebook Importing	Level 2 - Progression	Mon 13 Sep	1 day
Online	Analyst's Notebook Analysis	Level 2 - Progression	Tue 14 - 15 Sep	2 days
Online	Analyst's Notebook Dissemination	Level 2 - Progression	Thu 16 Sep	1 day
Online	Analyst's Notebook Social Network Analysis	Level 2 - Progression	Fri 17 Sep	1 day

Colour Key:

- Green rows are i2 Analyst's Notebook courses
- Gold rows are i2 iBase courses
- Orange rows are courses where we use iBase & Analyst's Notebook together



**For an explanation of Level 1, 2 & 3
Categorisation definitions, see page 2.**