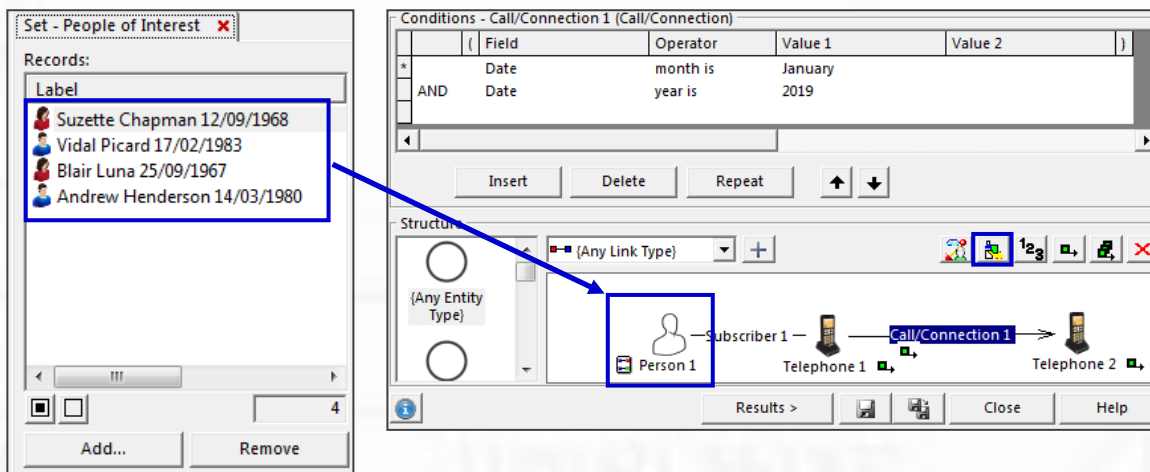




ENTER OUR COMPETITION  
TO WIN TRAINING FOR YOU  
OR YOUR ORGANISATION

### Featured Course iBase Analysis:

*Eg Find calls made in January 2019 that were potentially made by 4 people of interest:*



## This Issue

	Page
<b>Team News</b>	2
<b>Competition</b>	3
<b>Tips &amp; Tricks:</b> Analyst's Notebook: Transforming an Association Chart into a Timeline Chart iBase: Re-categorising Sets	4-5

	Page
<b>Featured Course</b> iBase Analysis	6
<b>Customised, Bespoke &amp; Onsite Courses</b>	7
<b>Course Schedule</b>	8

## Team News

### Discount for Careful Planning

Something we all share is the need for planning ahead. We often need to book training rooms 3-6 months in advance to get the dates we need. We are sure it can take time from the moment you decide you need training, to the point you have budget approved and time away from the office agreed. Now combine that with a need to stretch limited budget as far as you can.

We are proposing that you talk to us as early as you can to discuss a training program. We can help you decide what training is needed (including a customised course), and between us decide on the ideal timescales and plan ahead. Instead of booking ad hoc courses as and when you need them, we can offer discounts for a planned training program. The more training you commit to, the more discount we can offer and that way everyone wins.

We are happy to discuss training requirements and give pricing for budgeting purposes without you having to commit to the training until you are happy it is the right solution.

Please call or email us (details on page 7) and lets work out a better way to buy training.

### Customer Visits

We would like to come and meet more of you at work to make sure we understand what you do, and what we can do to help. This will ensure our course development processes allow us to be best placed to support you. If you would like us to visit for an informal chat over coffee then please get in touch.

Of course while we are with you we would be more than happy to share some software knowledge and even provide a demo to help raise awareness within your organisation.

Please call 01223 967100 or email [info@shortestpathtraining.co.uk](mailto:info@shortestpathtraining.co.uk) if you might be interested.

### IBM Roadshows

As you may be aware, IBM Roadshows have been taking place around the country and we are delighted to be part of the "tour" again. The next Roadshow is 3rd July in London. We are there presenting an iBase Advanced Analysis demo. We are also there to catch up and answer any questions you may have. If you belong to a Government Agency and would like more information and to register, please contact David Scott at [scottdav@uk.ibm.com](mailto:scottdav@uk.ibm.com).

### SOCEX Strategic Conference

On the 22nd and 23rd May in Kenilworth, we attended the SOCEX Strategic Conference as sponsors.

The conference was well attended including members of the police forces in the UK, National Crime Agency, the Home Office, various ROCUS and other regulatory and enforcement authorities. It was great to meet and chat with some of you and our SOCEX competition winner went home with some free training. It was a useful networking opportunity for everyone.

The conference programme was made up of discussion groups, speakers, workshops with the key themes including, Fraud and Cyber, Drugs and harm, Modern Slavery and Human Trafficking. For more information go to:

<https://socexconference.co.uk/events/past-events/>



Enjoy edition number 6, and please do let us know if there is anything you would like included in future publications.

Very Best Wishes from the Team



Here's your chance to win training for you or your organisation. We are looking for case studies which highlight the fact that training undertaken by users had a substantial bearing on a successful outcome.

In particular we would like examples where training lead to a change in how you, or your organisation, approached and carried out a task using i2 software.

### What you could win:

We will then choose 3 winners who will receive one of the following prizes:

- 1st place—3 days training with us worth just over £1,000
- 2nd place—2 days training with us
- 3rd place—1 day of training with us

### What we need from you:

We would like the case study to include what the problem was, what training was taken, what changed as a result of the training, and the outcome. Screen shots of the process and example charts would be helpful to other readers, and if required we can help advise how to capture them. The case study doesn't need to be lengthy, just clear in explaining how the training helped.

### To submit a case study:

Can you please make sure that you have:

- Permission to share the case study with us
- Understood that we may publish your case study in our marketing material—including on-line and in our newsletter
- Sanitised the case study where appropriate
- Read the Terms and Conditions

For more information and to submit an entry please contact us on [info@shortestpathtraining.co.uk](mailto:info@shortestpathtraining.co.uk)

The closing date is 31st August 2019.

**Join us at the IBM i2 Headquarters for an in-person IBM i2 European User Group.**

Starts: Sep 11, 2019 8:00 AM (GB)

Ends: Sep 12, 2019 5:00 PM (GB)

This two-day event will cover various topics and will help you refine and grow your IBM i2 skills.

Examples of topics that will be covered:

- IBM i2 roadmap and product updates
- Getting the most out of IBM i2 Analyst's Notebook
- Keynote presentation from the founder of i2, Mike Hunter\*
- Various technical and functional training sessions including a Master Skills class

Please note spaces are limited so please send an email to Maria Fürst ([maria.furst@se.ibm.com](mailto:maria.furst@se.ibm.com)) to register your interest today! Please also mention who invited you.

### Location

IBM United Kingdom Limited - Cambridge  
The Visual Space, Capital Park, Fulbourn  
Cambridge, CB21 5XH

For more information please visit:

<https://community.ibm.com/community/user/security/events/upcomingevents>

and scroll to the 11th September

\*SPT Note—Mike is also one of our Directors!

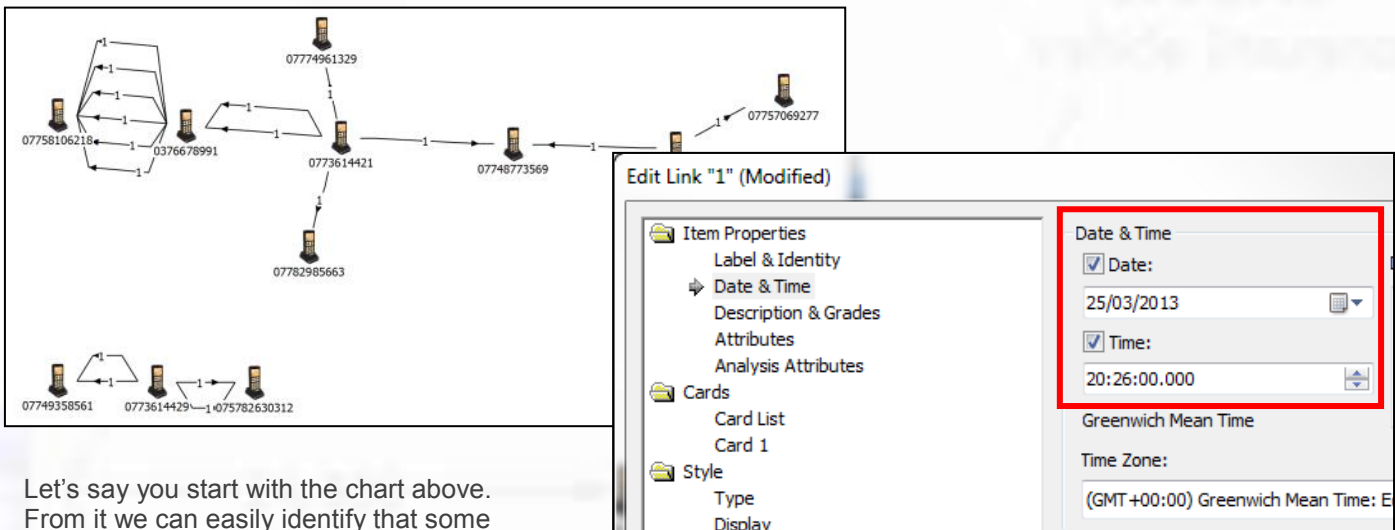


# Tips & Tricks

View Tips & Tricks as a YouTube Video: <https://tinyurl.com/ybvfkv56>

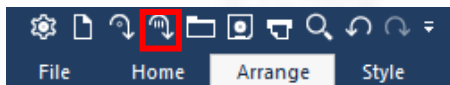
## Transforming an Association Chart into a Timeline Chart

Users often want to look at their data from several different perspectives such as relationships in an Association Chart, or in Date and Time order using a Sequence of Events chart. For example, if you were looking at communication data you may want to look at how the phones are connected and also when the connections occurred. If you create a chart in a particular way then you can easily copy one chart and turn it into the other.



Let's say you start with the chart above. From it we can easily identify that some pairs of phones are in communication a lot more than others. We can also see that we have one larger network at the top and a much smaller, separate network at the bottom.

1. Select the Entities and Links you would like to see in a Sequence of Events—in this example we will use Ctrl A to select them all.

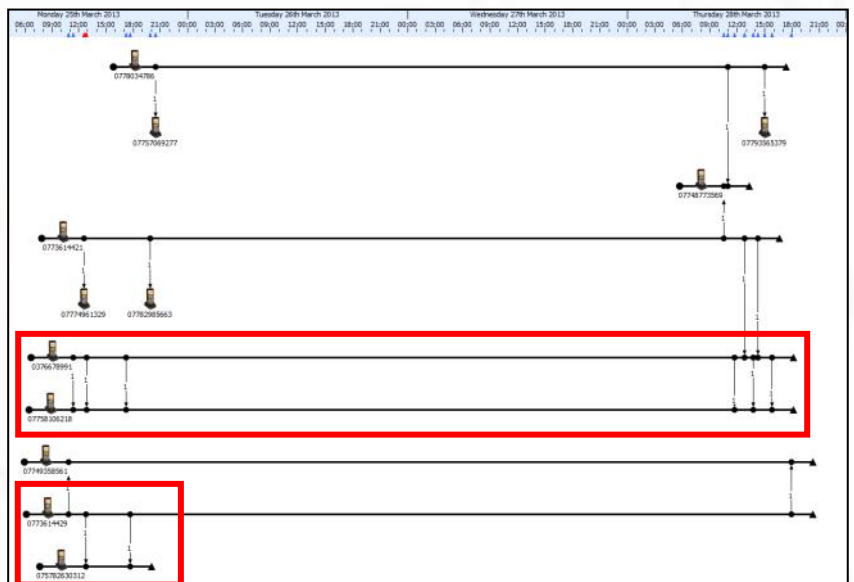


2. Click on Copy to New Timeline chart:
3. Wait until the software has finished laying out your new chart.

From this new chart we can see there is a period of activity (Monday), then a gap (2 days) and then finally on Thursday we have activity again.

We can also see differences in behaviour that may be important, for example the first red rectangle shows a pair of phones that communicate 3 times on both days. The second red box shows a pair only communicating on Monday.

Note that each call has to be on as a link so we can put the date and time of each call in the Item Properties Date and Time.



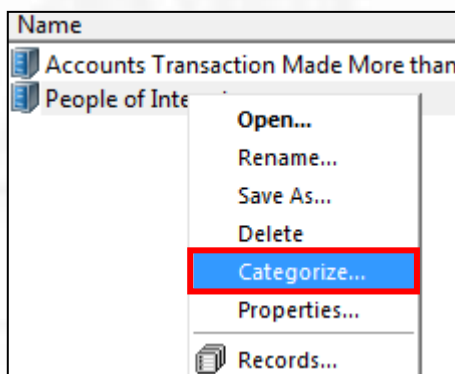
# Tips & Tricks

View Tips & Tricks as a YouTube Video: <https://tinyurl.com/ybvfkv56>

## iBase Re-categorising a Set

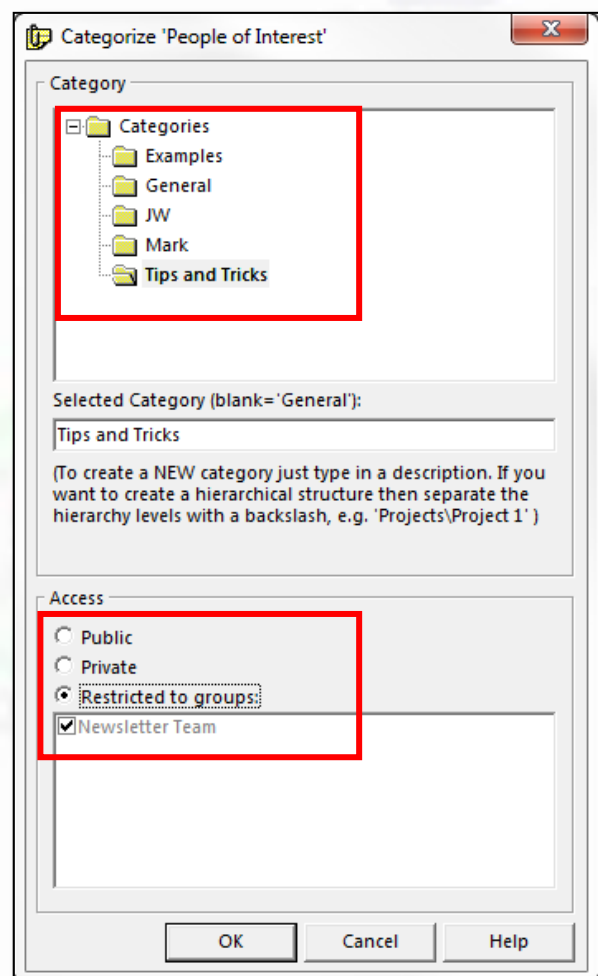
Sets in iBase are a great way of organising and keeping hold of the results of searches, queries and other analytical tools. Users can Categorise their sets into folders and subfolders when they are saving them. These can be shared with other users of the database or kept private. Once a set has been categorised (put into one of the subfolders) it can be re-categorised (moved to a different subfolder).

1. Right mouse click on the set that you wish to be re-categorised and select Categorize...




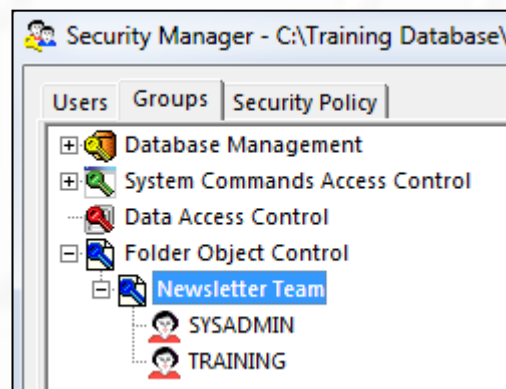
2. Chose the new Category that you want the set to be moved to.
3. Change the Access—this allows you to share the Set with everyone (Public), keep it Private or give access to a particular Restricted Group.

As well as Sets you can re-categorise other things such as Queries, Report Definitions, Charting Schemes and so on—anything that gets saved with the opportunity to put it in a folder. These things are called Folder Objects.



## iBase Designer Tip

 Restricted Groups will only be available if they have been set up by the iBase Designer. To set them up get your Designer to use Security Manager to create a new Folder Object Control Group.



# Featured Course

## iBase Analysis

*“I am sure there are other types of queries and analysis tools available and I need to be able to use them with confidence.”*

### Course Description

Increase your knowledge of the analytical functionality available in the software. Build on previous knowledge gained from the iBase Standard Course, or by use of the software, over a period of time. Analyse data using a combination of functionality in order to make the most of iBase as an analytical tool. On this course we move away from the basics and look at how the more advanced options can be put into action. The course uses a variety of information to ensure that students deal with familiar data: such as communication records, financial records, and various other data sets. It also exposes students to new and useful ideas that can help them in their everyday analytical role.

### Objectives

By the end of the course students will be able to:

- use a combination of tools to discover hidden connections and patterns within the database.
- use a variety of advanced queries and set up automated processes.
- use the Scored Matching and Auto-run functions to enhance and speed up the analytical process.

### Topics Covered include:

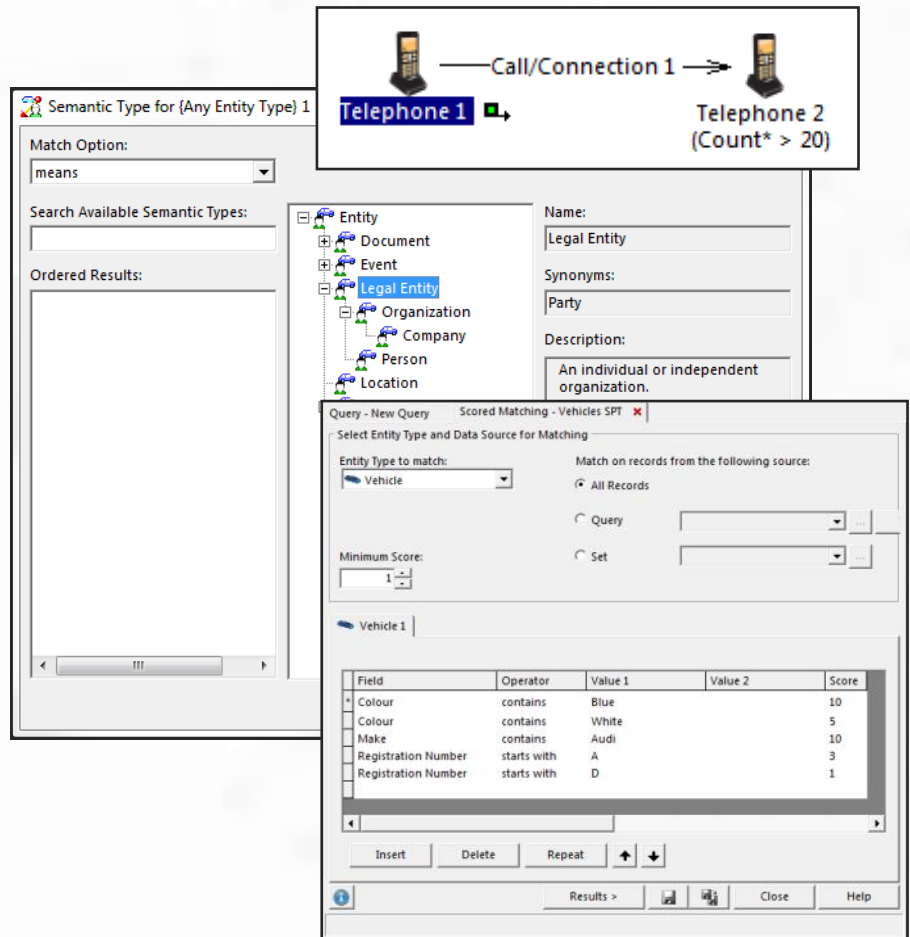
#### Queries

- Queries that prompt
- Using Queries that count
- Using Sets and Queries in a Query
- Using AND/OR in Queries
- Semantic Queries

#### Browse and Auto-run

#### Additional Tools

- More advanced use of Search 360
- Analysing and Comparing Sets
- Scored Matching
- Field Calculator



# Customised, Bespoke & Onsite Courses

**Shortest Path's customised and on-site courses may be the best solution for your training requirement.**

## Advantages can include

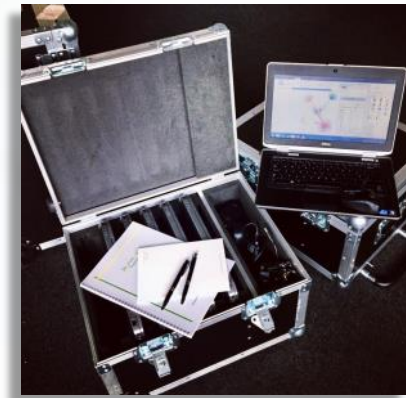
- Less time out of the office
- Savings on travel and accommodation costs
- Saving time by covering just the topics you need
- Helping in applying learning by using customer specific data and tasks

If you have a group of people who need training, or would like a customised training course, then call us to talk through the options and we can help advise on the best solution and costs. Please note we charge for a minimum of six delegates.

As with all of our training, we try our best to make things as easy as possible for you. We can help you to work out what would be suitable topics to cover.

If you provide some example data, as well as any typical tasks, we can train your students how to use the software to provide the most efficient solution.

To enable us to train at your office, all you would need to supply is a suitable room. We ship everything that is needed to arrive before the course; including laptops\*, peripherals, cables, extension leads and course materials. Our trainer will arrive early on the morning of the course and set everything up in the assigned room. It's all very straight forward!



\*Please note that it may not be practical for us to supply laptops if you are overseas, but we can always work out a solution.

## Contact Information and How to Book

### Booking Scheduled Courses

1. Select your course, dates and location (from our current schedule).
2. Email or phone SPT to check availability.
3. Book provisional places.
4. Complete booking form to confirm places.

### Booking Custom Courses

1. Email or phone SPT to discuss requirements.
2. Book provisional course and dates.
3. Complete booking form to confirm course.

carols@shortestpathtraining.co.uk  
+44(0)1223967100

Shortest Path Training Limited,  
Future Business Centre,  
Kings Hedges Road,  
Cambridge  
CB4 2HY

# SPT Course Schedule July 2019 — June 2020

Description	Days	Date(s)	Location
<b>2019</b>			
iBase Standard	2	Thu-Fri 18-19 Jul	Cambridge
iBase Designer	5	Mon-Fri 22-26 Jul	Cambridge
Analyst's Notebook Standard	3	Mon-Wed 16-18 Sep	London
iBase Standard	2	Thu-Fri 19-20 Sep	London
Analyst's Notebook Standard	3	Mon-Wed 28-30 Oct	Cambridge
Analyst's Notebook Analysis	2	Mon-Tue 4-5 Nov	Cambridge
Analyst's Notebook Dissemination	1	Wed 6 Nov	Cambridge
Analyst's Notebook Importing	1	Thu 7 Nov	Cambridge
Analyst's Notebook Social Network Analysis	1	Fri 8 Nov	Cambridge
iBase Standard	2	Mon-Tue 11-12 Nov	Cambridge
iBase Analysis	1	Wed 13 Nov	Cambridge
iBase Importing	1	Thu 14 Nov	Cambridge
Using iBase with Analyst's Notebook	1	Fri 15 Nov	Cambridge
iBase Designer	5	Mon-Fri 18-22 Nov	Cambridge
Analyst's Notebook Standard	3	Mon-Wed 2-4 Dec	Cambridge
Analyst's Notebook with Cyber and other Digital Data	2	Mon-Tue 9-10 Dec	Cambridge
<b>2020</b>			
Analyst's Notebook Standard	3	Mon-Wed 20-22 Jan	Cambridge
iBase Standard	2	Thu-Fri 23-24 Jan	Cambridge
Analyst's Notebook Standard	3	Mon-Wed 17-19 Feb	Cambridge
Analyst's Notebook Analysis	2	Thu-Fri 20-21 Feb	Cambridge
Analyst's Notebook Dissemination	1	Mon 2 Mar	Cambridge
Analyst's Notebook Importing	1	Tue 3 Mar	Cambridge
Analyst's Notebook Social Network Analysis	1	Wed 4 Mar	Cambridge
iBase Standard	2	Mon-Tue 9-10 Mar	Cambridge
iBase Analysis	1	Wed 11 Mar	Cambridge
iBase Importing	1	Thu 12 Mar	Cambridge
Using iBase with Analyst's Notebook	1	Fri 13 Mar	Cambridge
iBase Designer	5	Mon-Fri 16-20 Mar	Cambridge
Analyst's Notebook with Cyber and other Digital Data	2	Tue-Wed 28-29 Apr	Cambridge
Analyst's Notebook Standard	3	Mon-Wed 11-13 May	London
iBase Standard	2	Thu-Fri 14-15 May	London
Analyst's Notebook Standard	3	Mon-Wed 15-17 Jun	Cambridge
Analyst's Notebook Analysis	2	Thu-Fri 18-19 Jun	Cambridge